

GRUPO  LANMAR

www.grupolanmar.com.br

With over 50 years of experience, the Lanmar Group offers solutions in precision machining and thermoplastic injection, combining technology, quality and innovation, using Lean Manufacturing as the guiding principle of its processes.



Precision Machining Unit

Founded in 1973 with operations in Precision Machining, Waterjet Cutting, Mechanical Assembly, and Industrial Boilermaking, the Lanmar business unit is located in Hortolândia, São Paulo, 115 km from the capital. A 100% Brazilian company, certified ISO 9001 and AS 9100, it operates in the Aerospace, Oil & Gas and Automotive segments.



GRUPO  LANMAR

Precision Machining Unit

Customers

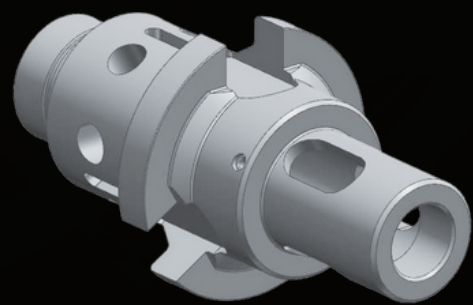


PETROBRAS

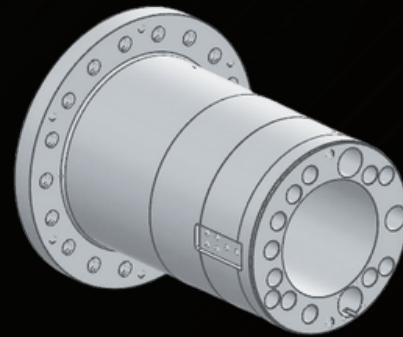


Precision Machining Unit

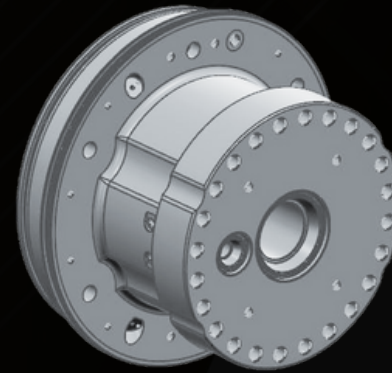
Oil & Gas Parts



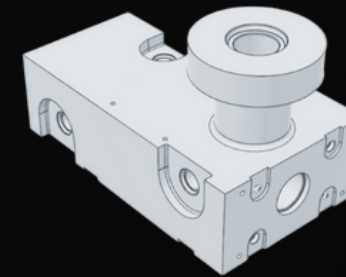
MAIN BODY STAR



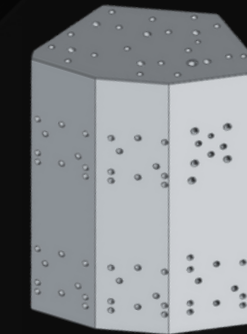
ORIENTATION SPOOL



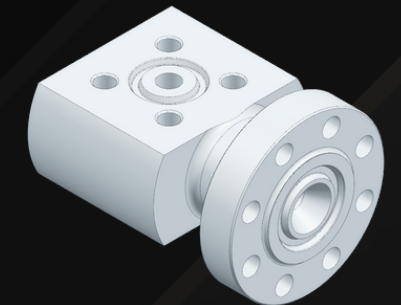
SEAL



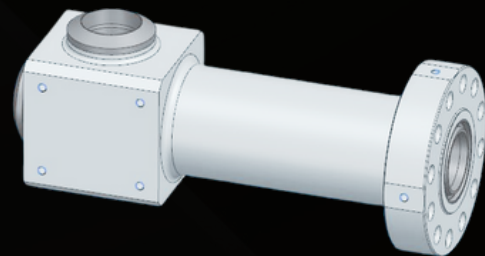
SIDE BLOCK



VALVE MANIFOLD



BLOCK ELBOW BODY



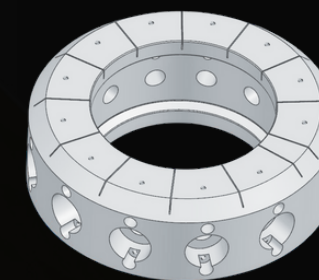
BLOCK THE BODY



SEGMENTED RING



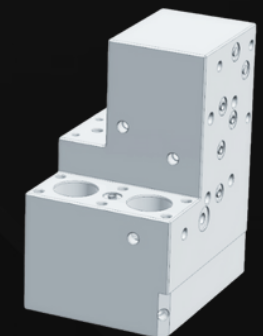
CONECTOR



CLAMP BODY



TUBING HEAD



MANIFOLD BLOCK

Precision Machining Unit

Oil & Gas Parts



Precision Machining Unit

Machine Park

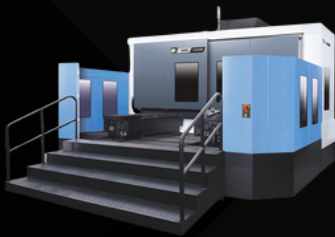
TYPE	QTY.	BRAND / MODEL	CAPACITY (mm)
Horizontal Machining Centers	1	Heller H10000	X: 2100 Y:1400 Z:1400
	1	Kitamura HX500i - Duplo Pallet	870 x 710 x 660
Vertical Machining Centers	1	Doosan - HM 1250W - Duplo Pallet	X: 2100 Y:1400 Z:1400
	1	Mazak VTC - 200C	1950 x 510 x 510
	1	Mazak VCN - 510C - High Speed	1050 x 510 x 510
	1	Mazak Integrex E-RAMTEC V/10	Ø 2000 x 1200
Multitasking	1	Mazak Integrex E-1060 V/8	Ø 1400 x 1200
	1	Mazak Integrex I630 V/6	Ø 800 x 1000
	2	Mazak Integrex I-200	Ø 668 x 1000 - Between end
Boring Machines	1	Cutmax 3PT	4000 x 2500 x 900 x 2000
	3	Cutmax 2TT	1800 x 1700 x 1500
Tornos Verticais	1	TWTV 2000 Wotan	Ø 2000
	1	TWTV 1300 Wotan	Ø 1300
Vertical Lathes	1	Multiplic 60A	Ø 700 - Car Ø 1100 - Bed
	4	CNC Index GU 1500	Ø 500 x 1500
Coordinate Measuring Machine	1	Dea Global	1200 x 3000 x 1000
	1	Mitutoyo	450 x 500 x 1000
	1	Mitutoyo	500 x 600 x 1000
Dimensional Measuring Arm	1	Mitutoyo	Ø 2800



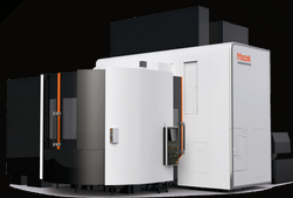
Heller H10000



Grob G550



Doosan - HM 1250W



Integrex E-RAMTEC V/10

TYPE	QTY.	BRAND / MODEL	CAPACITY (mm)
Vertical Machining Centers	1	Mazak VTC - 200C	1950 x 510 x 510
	1	Mazak VCN - 510C - High Speed	1050 x 510 x 510
	8	Romi Discovery 760	760 x 500 x 400
	4	Romi Discovery 1250	1200 x 600 x 600
	2	Romi Discovery 1250	1270 x 610 x 640
	2	Bridgport (Panmachine)	1020 x 540 x 540
	8	Romi D800	800 x 530 x 580
	2	Grob G550	800 x 950 x 1020
Horizontal Machining Centers	4	Grob G350	600 x 857 x 835
	2	Index GU 800	Ø 400 x 800
Horizontal Lathes	7	Index MC200	Ø 275 x 385
	2	Index MC400	Ø 275 x 585
	3	Multiplic 60A	Ø 700 (Carro) x 1100 (Barr.)
	2	Mazak QTS 200	Ø 280 x Ø 200
	1	Fanuc Robocut CX-C600iB	600 x 400 x 300
Erosion	1	Chamilles Roboform 40	700 x 500 x 400
	1	Infresa Compact 2 Orbital	300 x 200 x 250
Grinding	1	Ferdimat CA51E	304 x 76 x 38 x 500
Folder	1	Newton	1500 x 100 x 6
Water Jet Cuts	2	Jet Edge	3800 x 1800 x 100
	1	Jet Edge	750 x 1200 x 100

Thermoplastic Injection Unit

Founded in 1995 with operations in the thermoplastic injection molding segment, the Planmar business unit is located in Sumaré, São Paulo, 115 km from the capital. A 100% Brazilian company, certified to ISO 9001, IATF 16949, and ISO 14001, it operates in the automotive and home appliances segments.



Thermoplastic Injection Unit

Customers



Electrolux



HONDA

NEO
POLÍMEROS



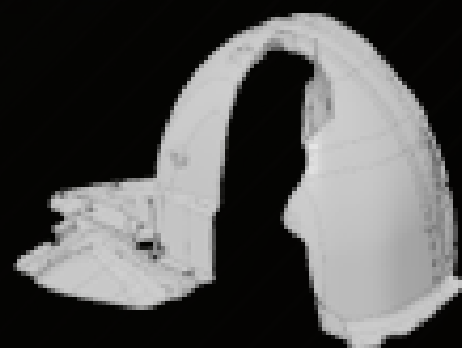
Whirlpool

Thermoplastic Injection Unit

Parts



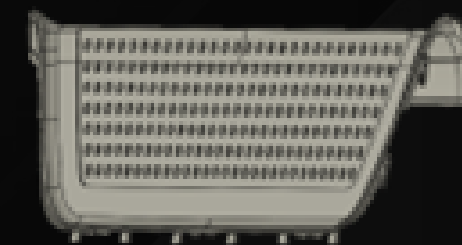
FLOOR



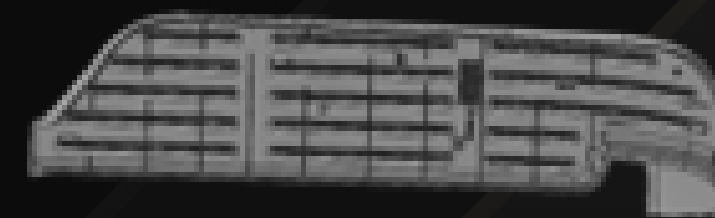
WHEEL BOX



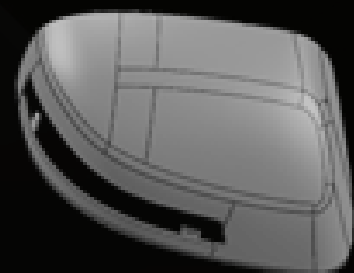
CENTRAL MUDGUARD



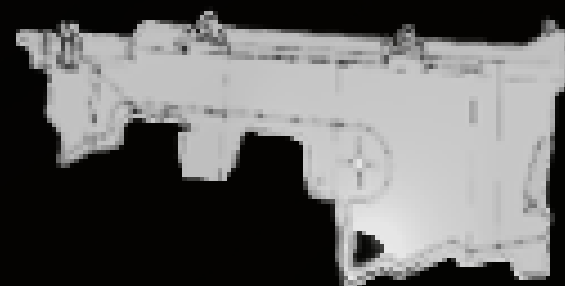
BUMPER CENTER TREAD



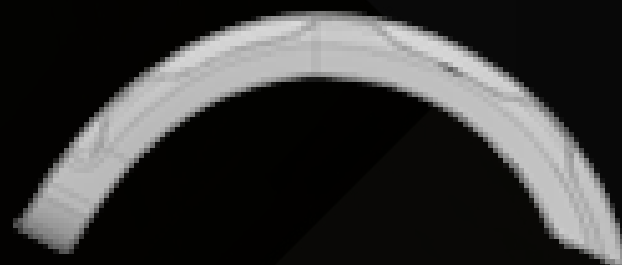
BUMPER SIDE TREAD



PLASTIC REARVIEW
MIRROR PROTECTOR



AIR DUCT
BI-INJEÇÃO



CLADDING



AIR DUCT



WATER RESERVOIR

Contacts



Precision Machining Unit

www.lanmarmetal.com.br

Estrada de Sumaré, 1010
Jardim Maria Antonia
Sumaré - SP
CEP 13181-791



Thermoplastic Injection Unit

www.planmar.com.br

R. Pérola, 500
Chácaras Assay
Hortolândia - SP
CEP 13186-524

GRUPO  LANMAR

www.grupolanmar.com.br



Lanmar Unit



Planmar Unit

